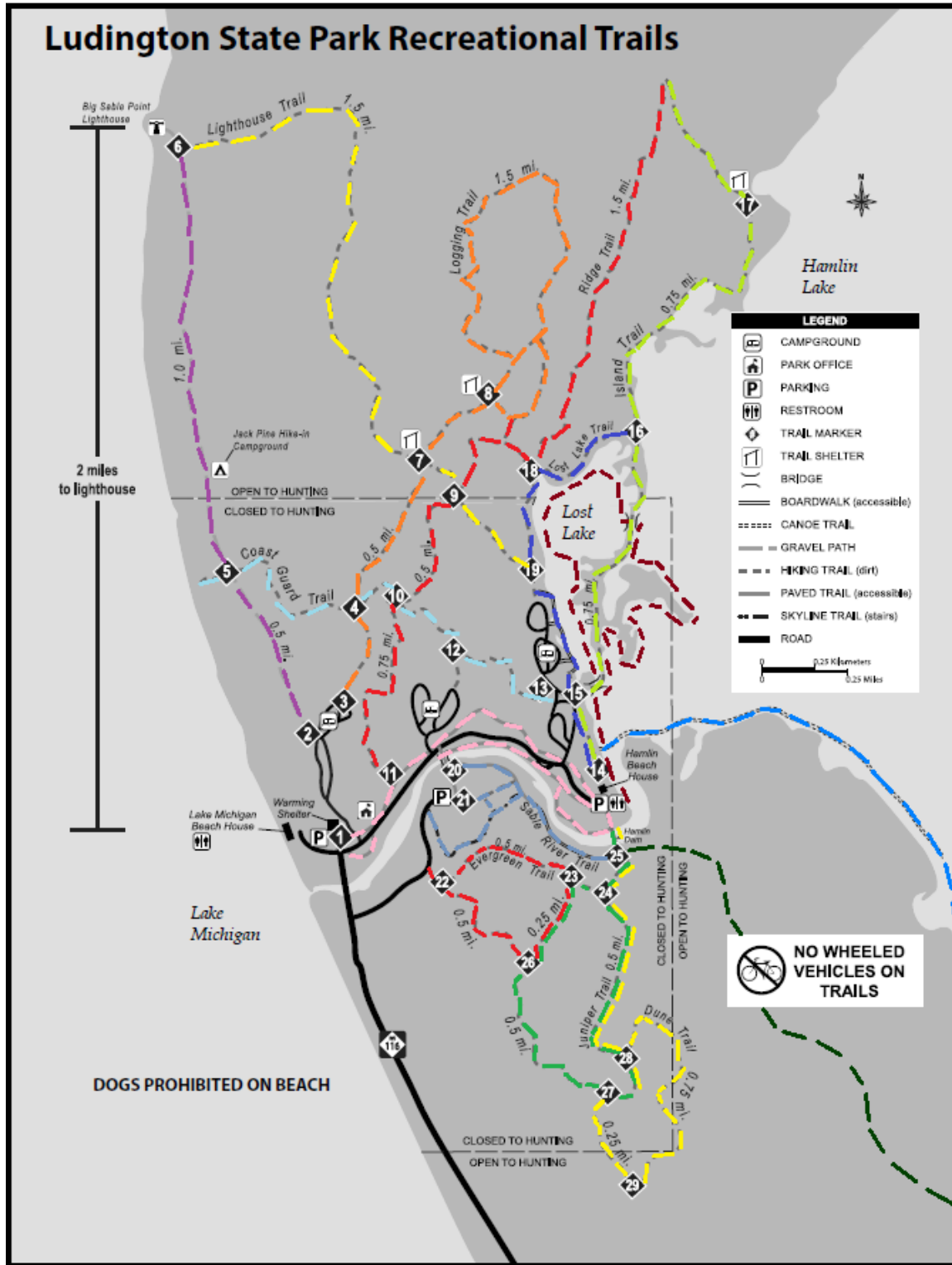


Ludington State Park Adopt-a-Trail Program

Overview of Trails and Individual Trail Segments

Trail Overview

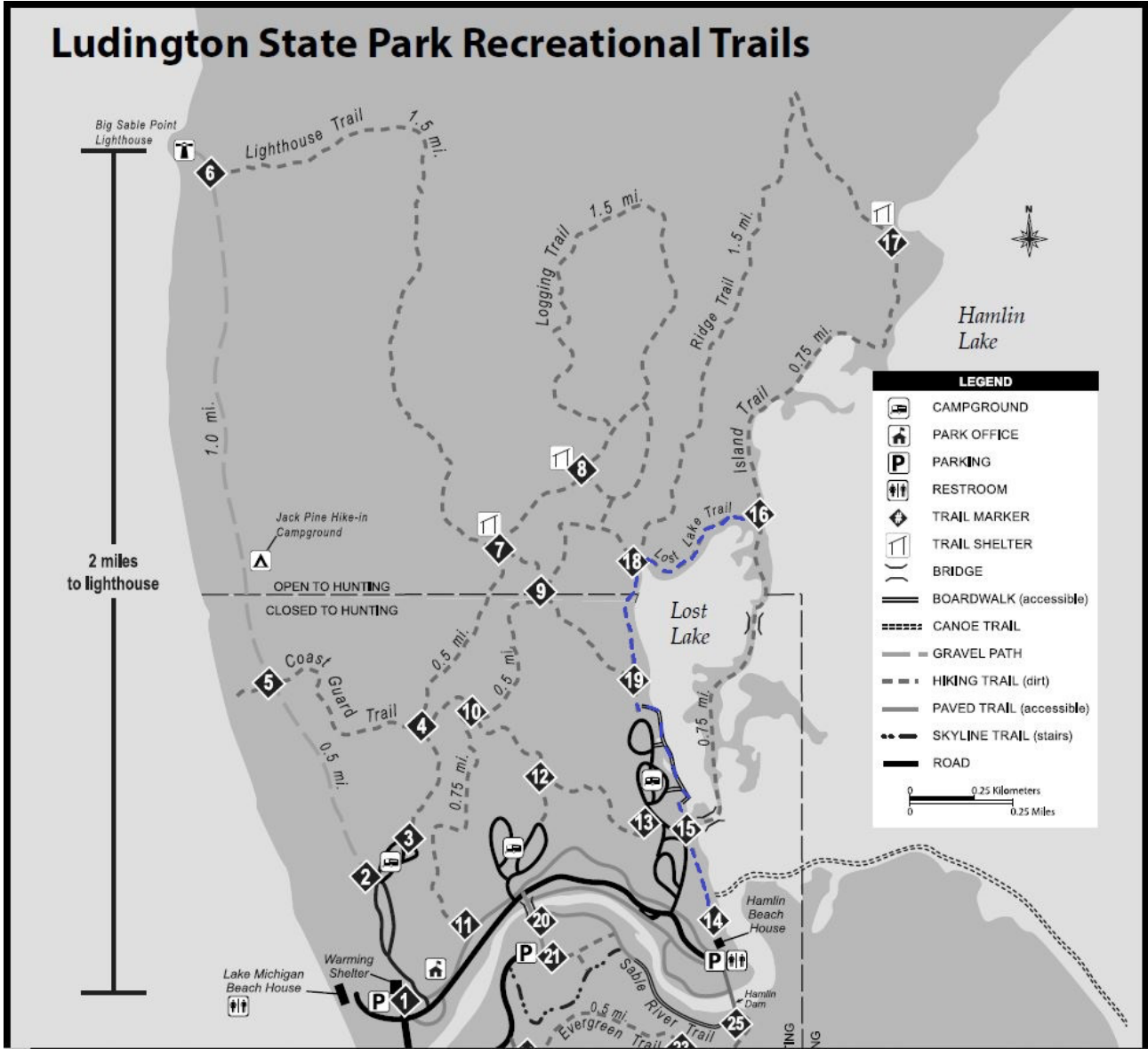


Island Trail



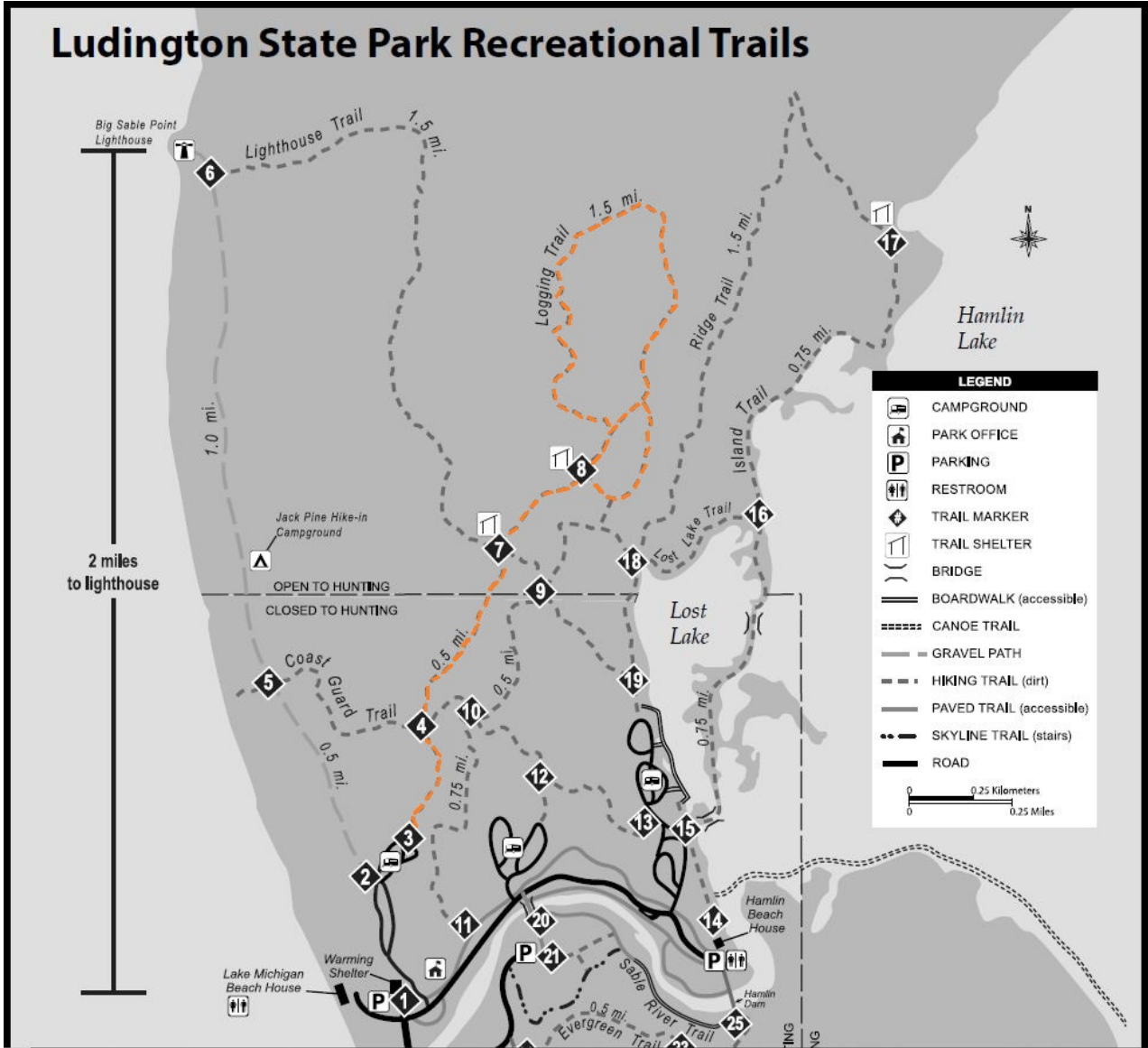
- Park at Hamlin Beach parking lot, trailhead is at north end of lot
- 2 miles, plus additional mileage to return via the Ridge and Lost Lake Trails or by backtracking along Island Trail
- Moderate difficulty, some boardwalks, roots, minor hills
- Beautiful trail that crosses islands and follows the shoreline of Lost and Hamlin Lakes, well forested, marshlands, views of the lake

Lost Lake Trail



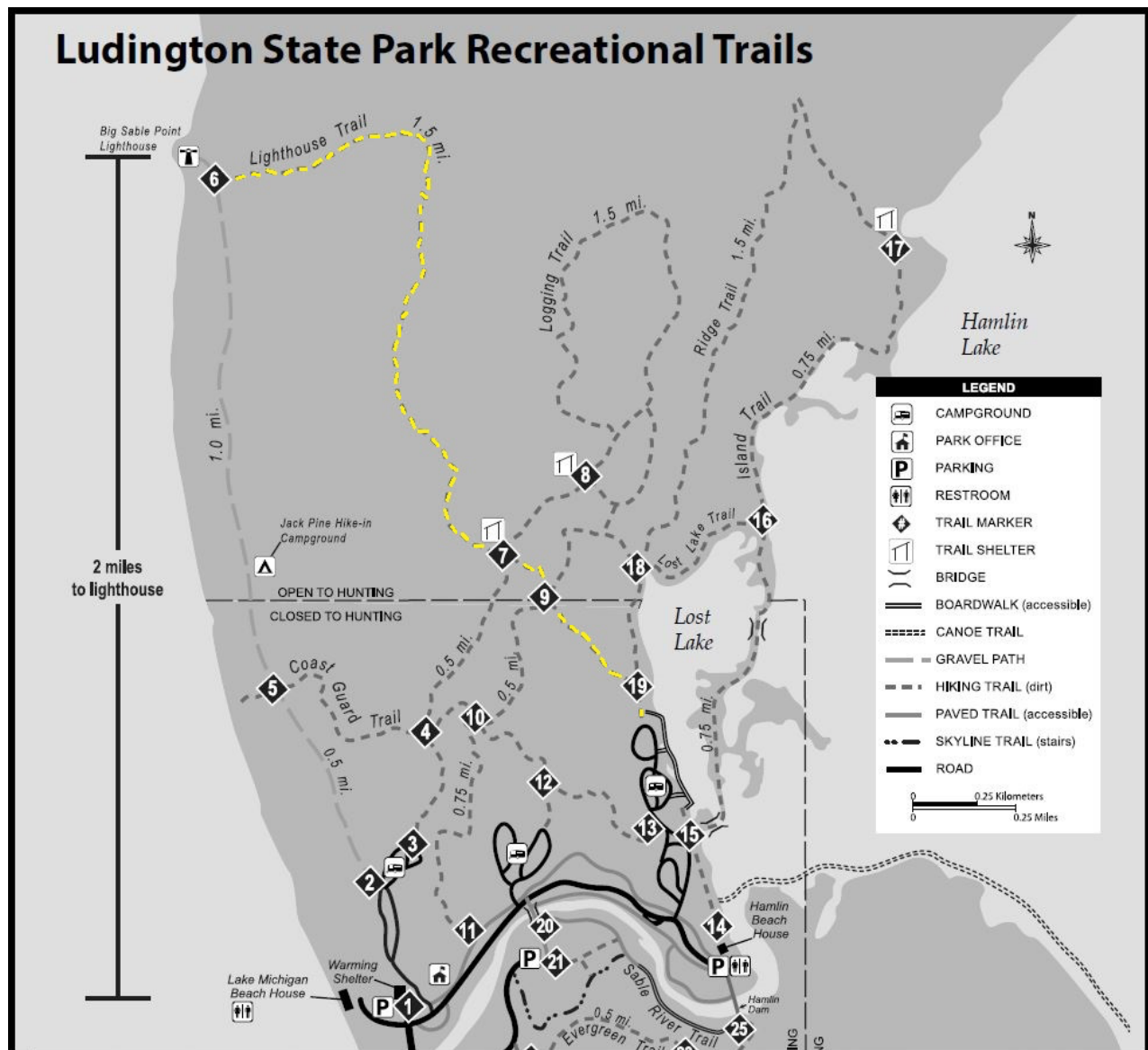
- Park at Hamlin Beach parking lot, access trailhead at north end of lot
- 1 mile plus return mileage via the Island Trail or other routes
- Moderate, boardwalks, stairs, some rooty and sandy areas
- Busy trail that follows along the edge west and north sides of Lost Lake, makes a nice loop with portions of the Island Trail

Logging Trail



- Park at warming shelter parking lot, access trailhead at north end of Pines Campground
- 3 mile lollipop plus return to warming shelter lot via backtracking or connecting with other trails pushes this to 4 plus miles
- Easy, other than the distance, solid tread, minor hills
- Trail travels through hardwood and pine forest, past wetlands and two historic stone shelter buildings

Lighthouse Trail



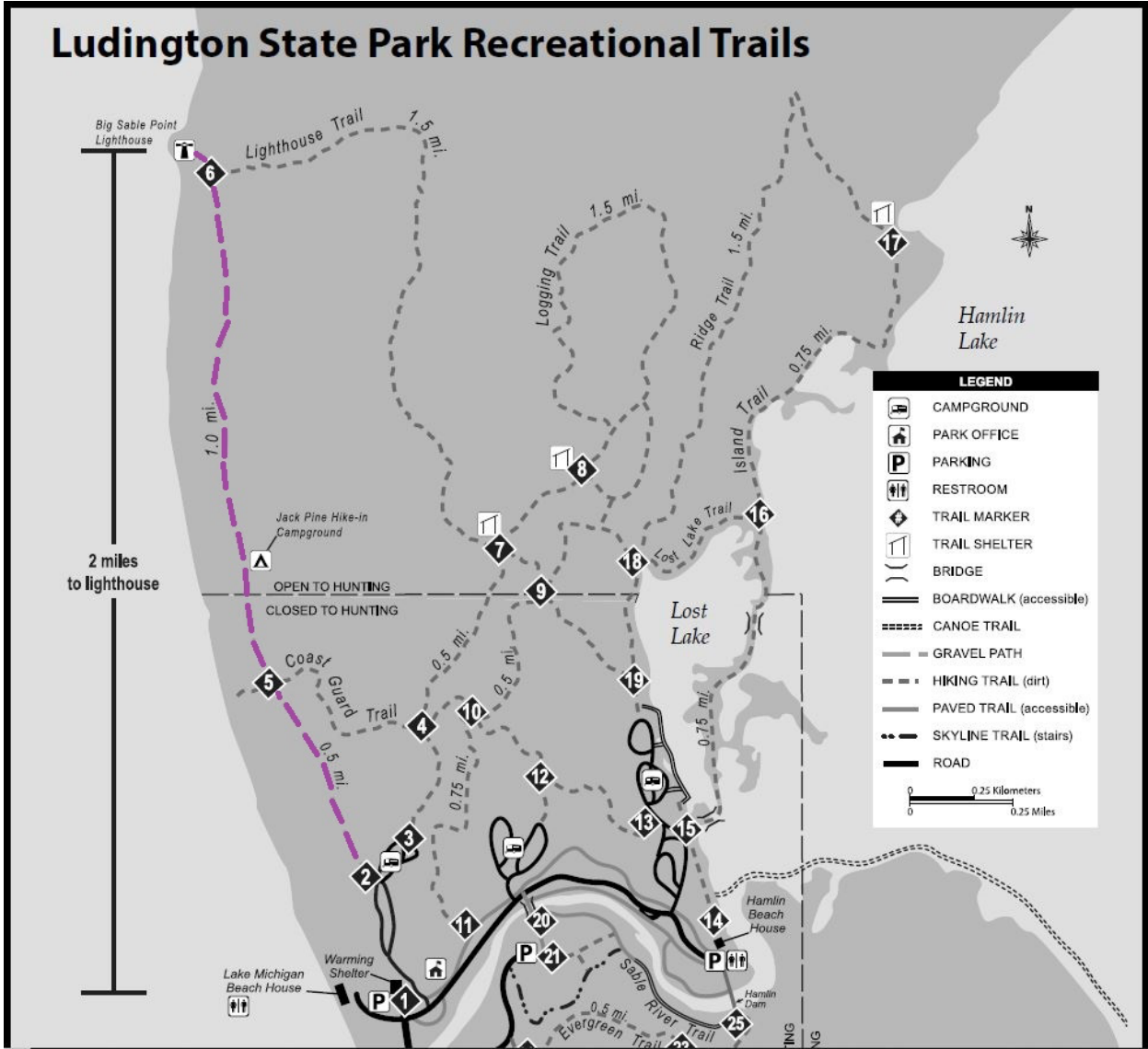
- Park at Hamlin Beach parking lot then hike to north end of Beechwood Campground via the Lost Lake Trail; the Lighthouse Trail begins just past the north end of the campground
- 2.5 miles one way, return to start is either by backtracking or connecting with other return trails, which will add 2 to 3 miles to hike; can be covered as portions of other loops
- Difficult, large hills, very soft sandy tread on west half of hike, following trail can be difficult in open dunes, flooding can occur
- The first half of the trail travels through forested hardwoods and pines, the climbs a ridge into open dunes and jack pine barrens; trail ends at the Big Sable Point lighthouse

Coast Guard Trail



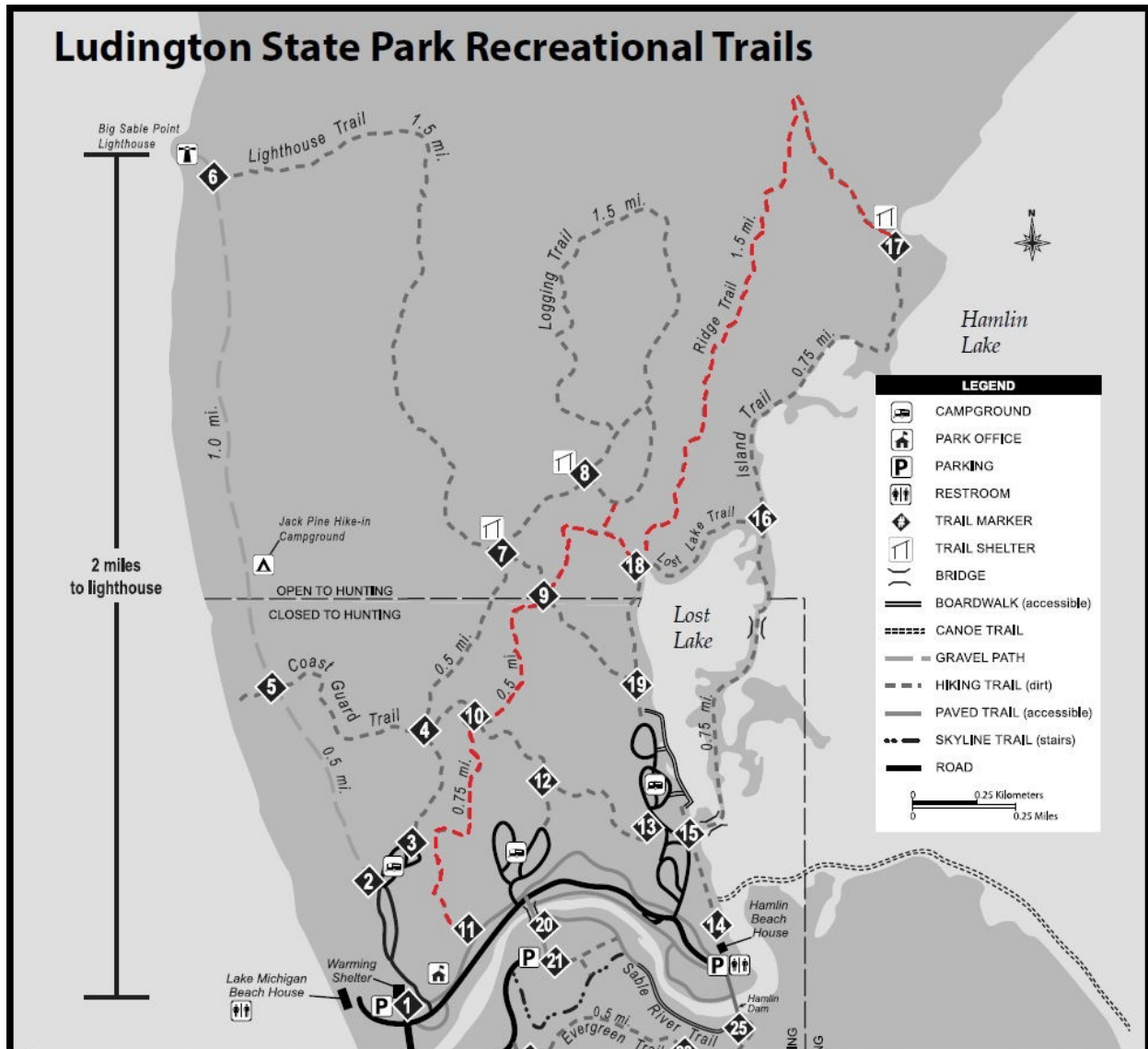
- Park at Hamlin Beach parking lot then hike to trailhead between front and middle Beechwood
- 1.5 miles plus return by other trails or backtracking
- Moderate difficulty due to a couple of large hills and roots; flooding at west end possible when water levels are high
- Crosses park from east to west, primarily forested hardwoods and some pines, enters dune environments as it nears Lake Michigan

Lighthouse Road



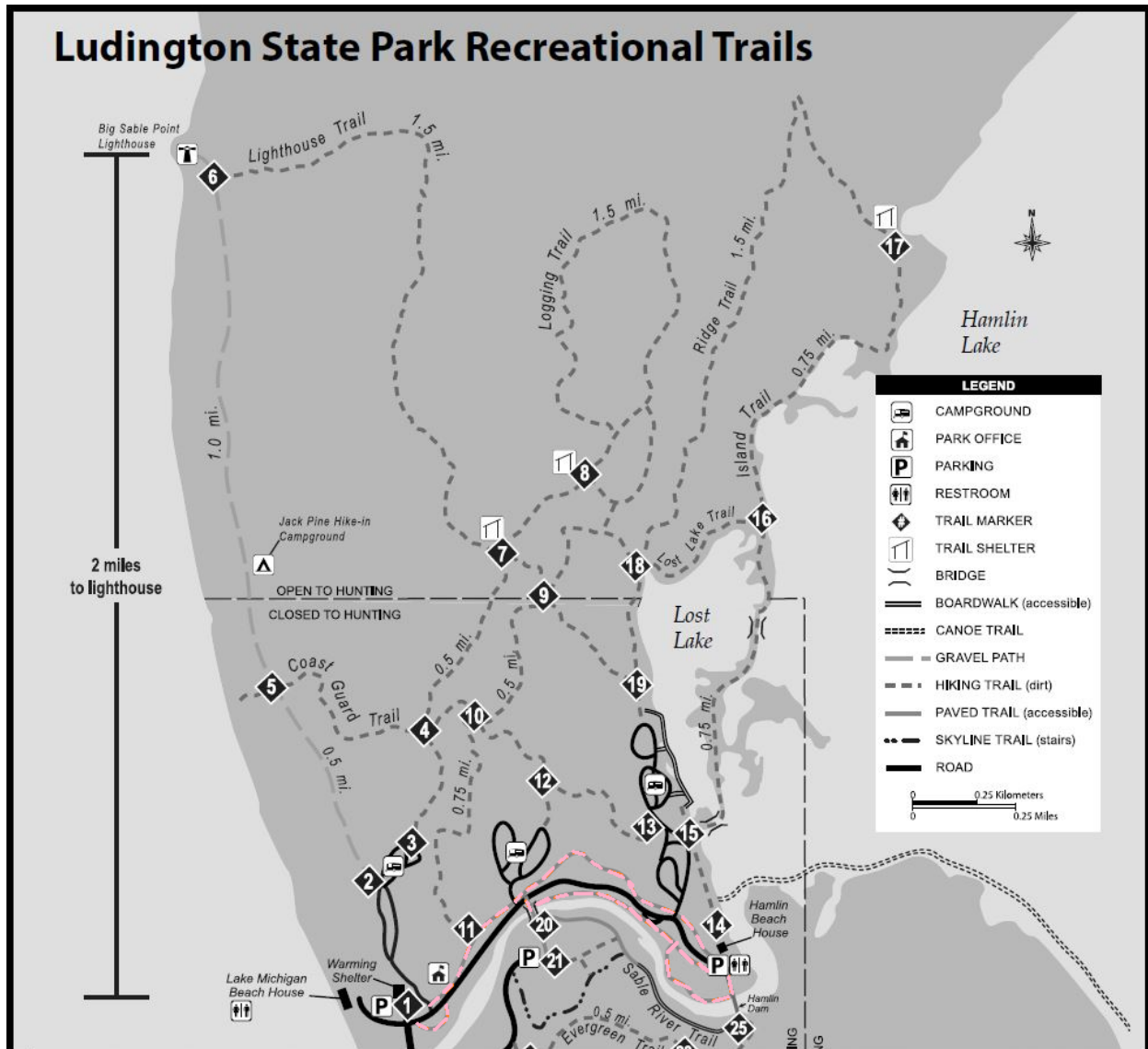
- Park at warming shelter parking lot, follow signs for lighthouse through the Pines Campground, Lighthouse Road starts next to campsite 59
- 1.8 miles one way, backtrack or follow beach for return to make 3.6 mile loop
- Moderate due to sandy tread and sun and wind exposure due to lack of shade, otherwise flat
- Very popular route with bicyclists and hikers looking to visit the Big Sable Point lighthouse, occasionally staff vehicles will be encountered on this road

Ridge Trail



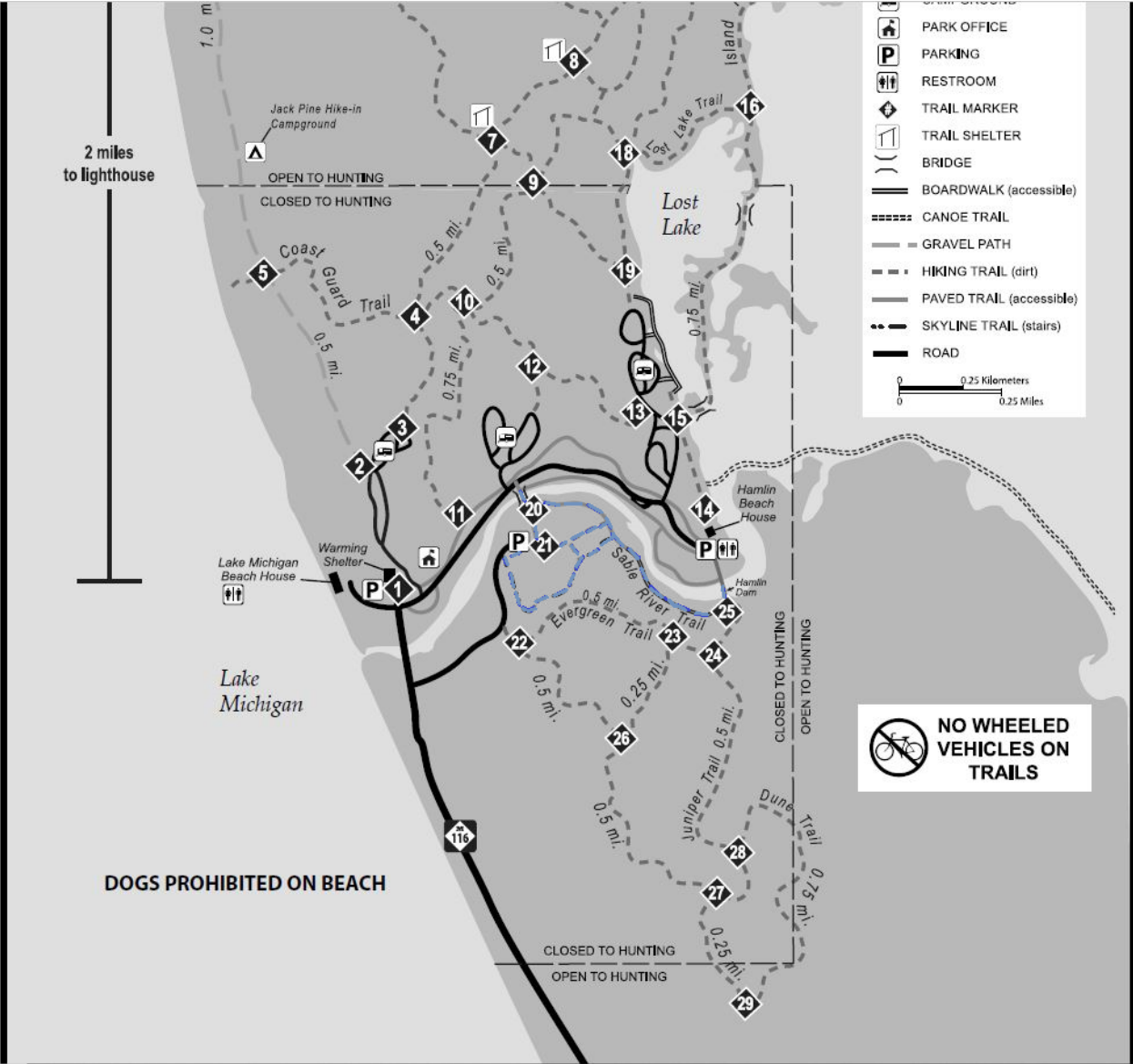
- Park in front of park headquarters or Cedar picnic area to access trail head
- 3 miles one way
- Difficult trail, long distance, hilly, lots of roots, some sections of sandy tread
- Connect with alternate trails, such as Island Trail, can turn this into an out and back of 4.5 – 5 miles, depending on the route
- Beautiful trail that is primarily forested with hardwoods and white pine, some views from north end of trail

Sable River Trail – North of River



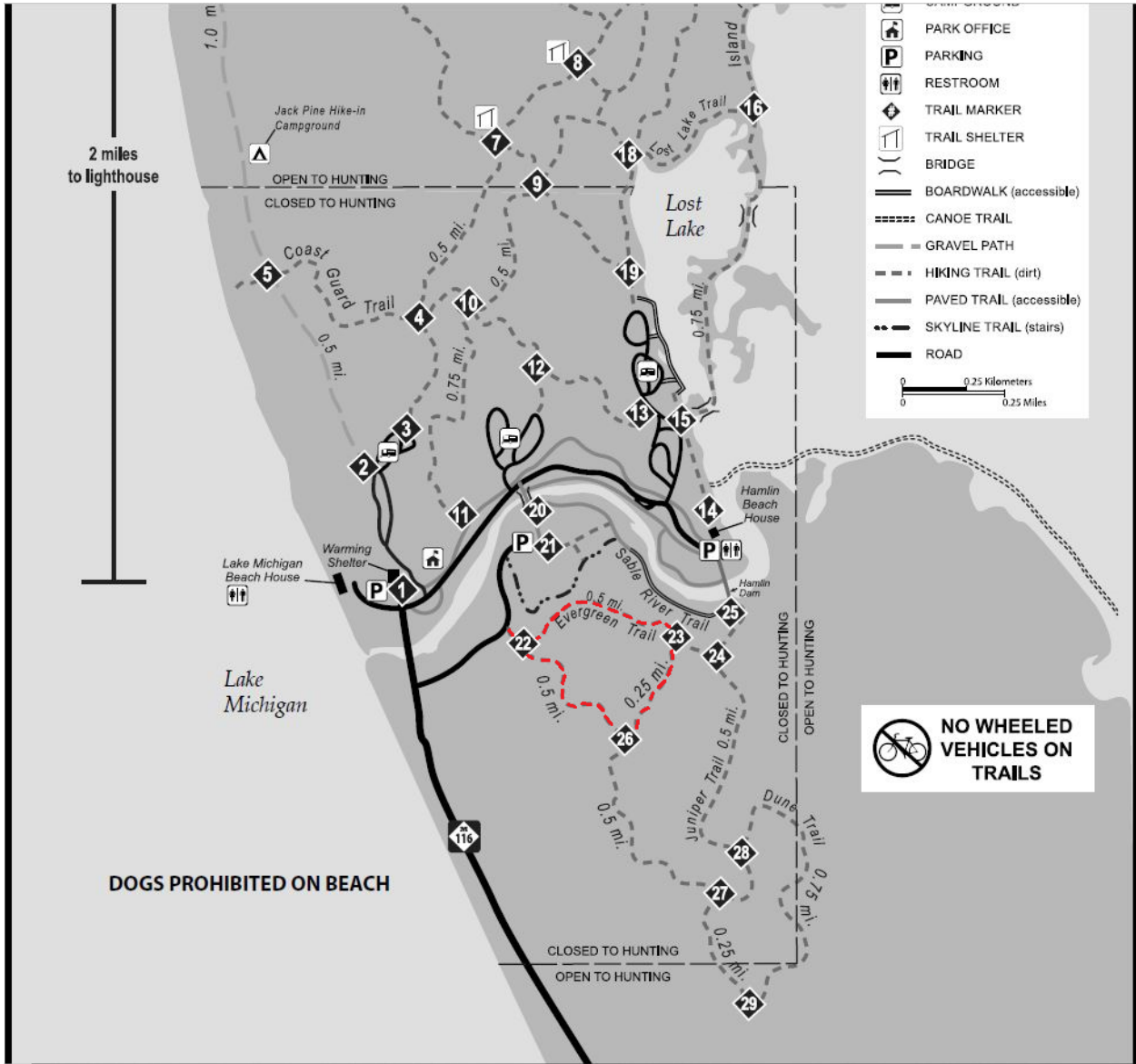
- Park at warming shelter or Hamlin Dam to access trail
- 2 miles 'round trip, including some backtracking
- Easy difficulty – flat, paved, some stairs near dam
- Primarily forested trail that connects all campgrounds with beaches and Hamlin Dam, very busy, lots of bike traffic

Skyline Trail and Sable River Trail – South of River



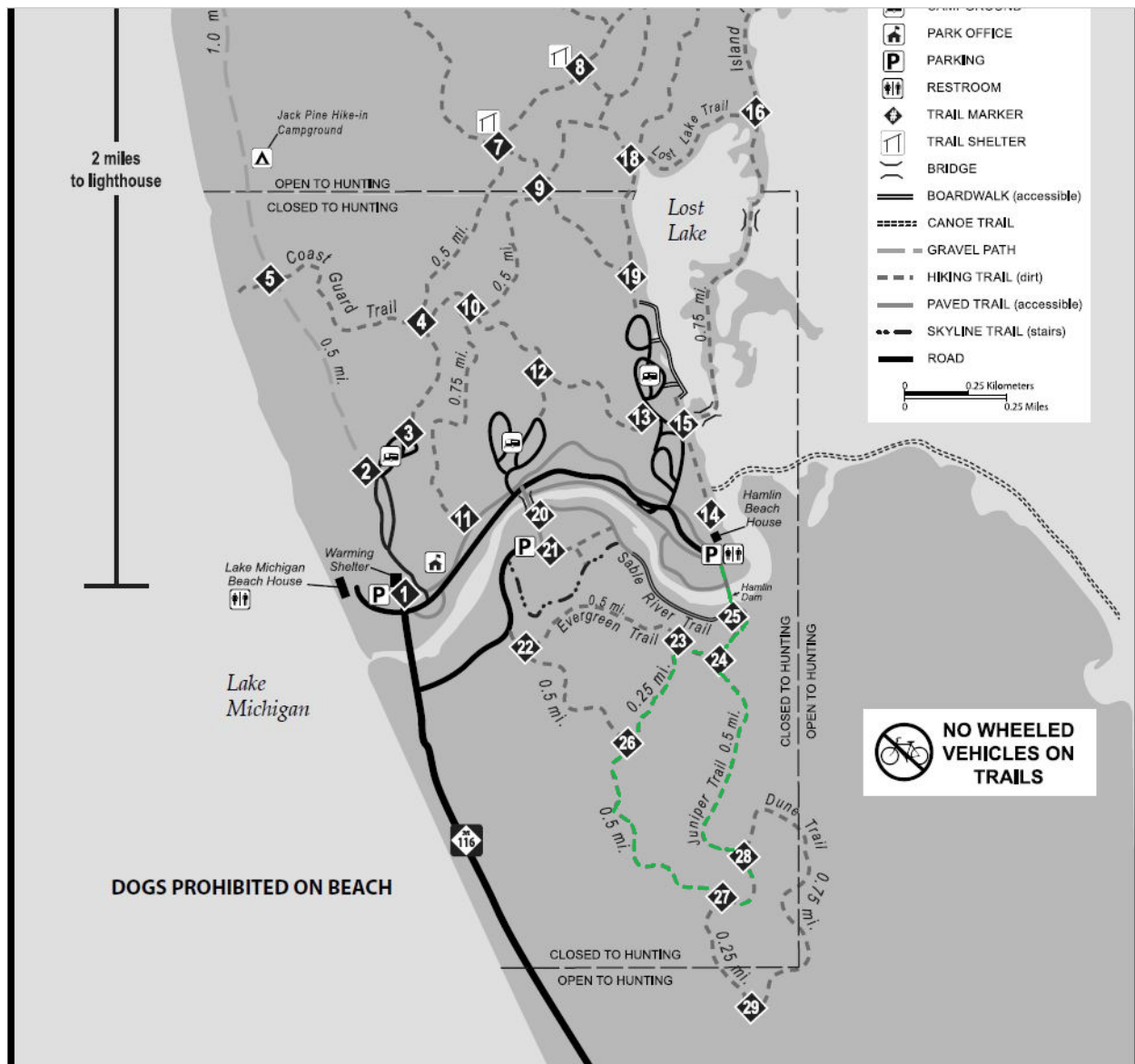
- Park at Hamlin Dam and cross to south side of river to access east end of trail or park at the Skyline Trail parking lot to access west side of trail
- 1.5 miles including backtracking
- Moderate to difficult, depending on fitness level, lots of stairs, boardwalk, some paved stretches
- Heavily forested trail and stretch of riverside boardwalk, great views, significant use by public

Evergreen Trail



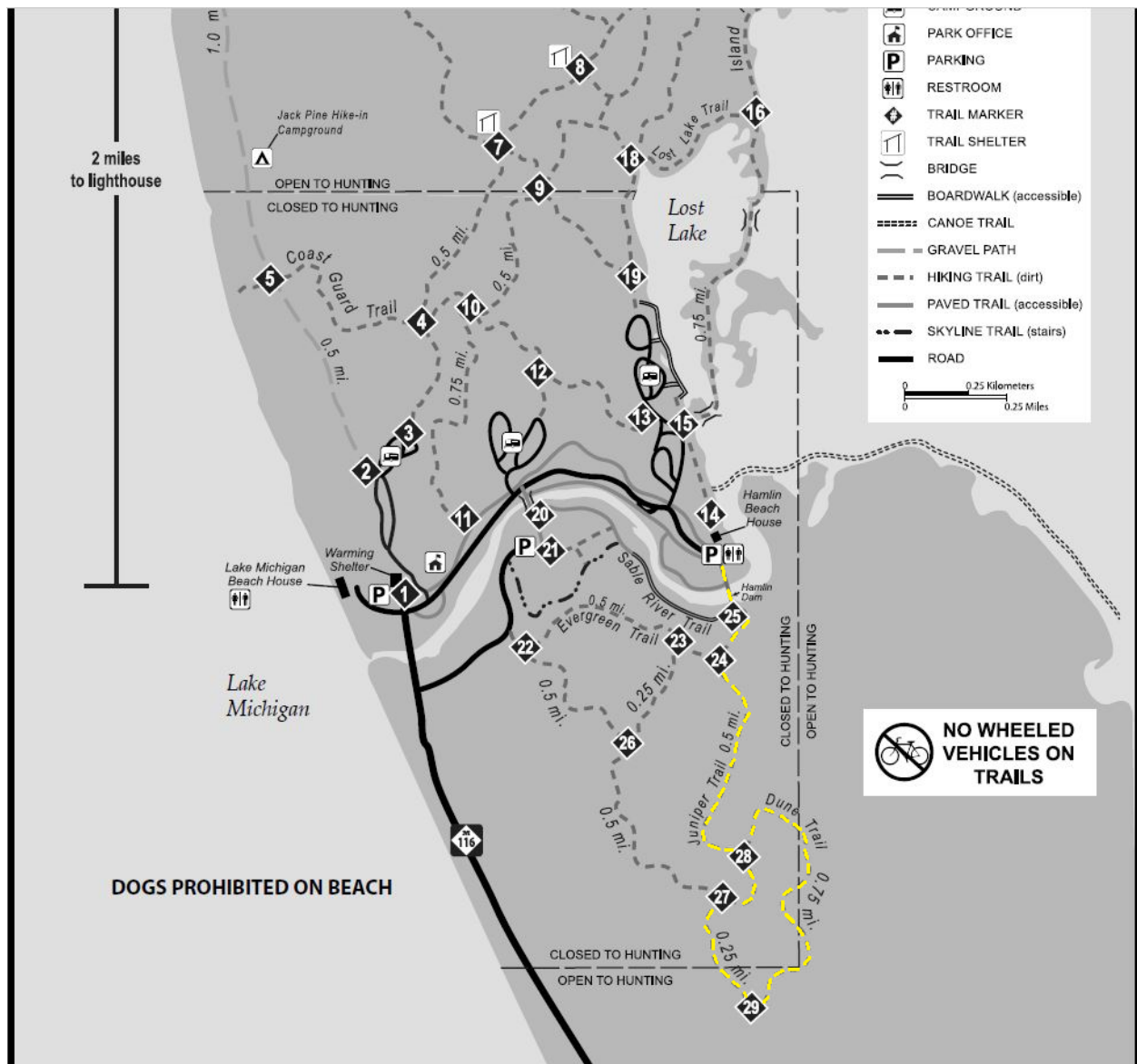
- Park near Hamlin Dam then cross dam to access trail or access along Amphiteather Road
- 1.5 miles 'round trip
- Moderate difficulty, small hills, sandy tread
- Trail travels through jack pine barrens and some open dune

Juniper Trail



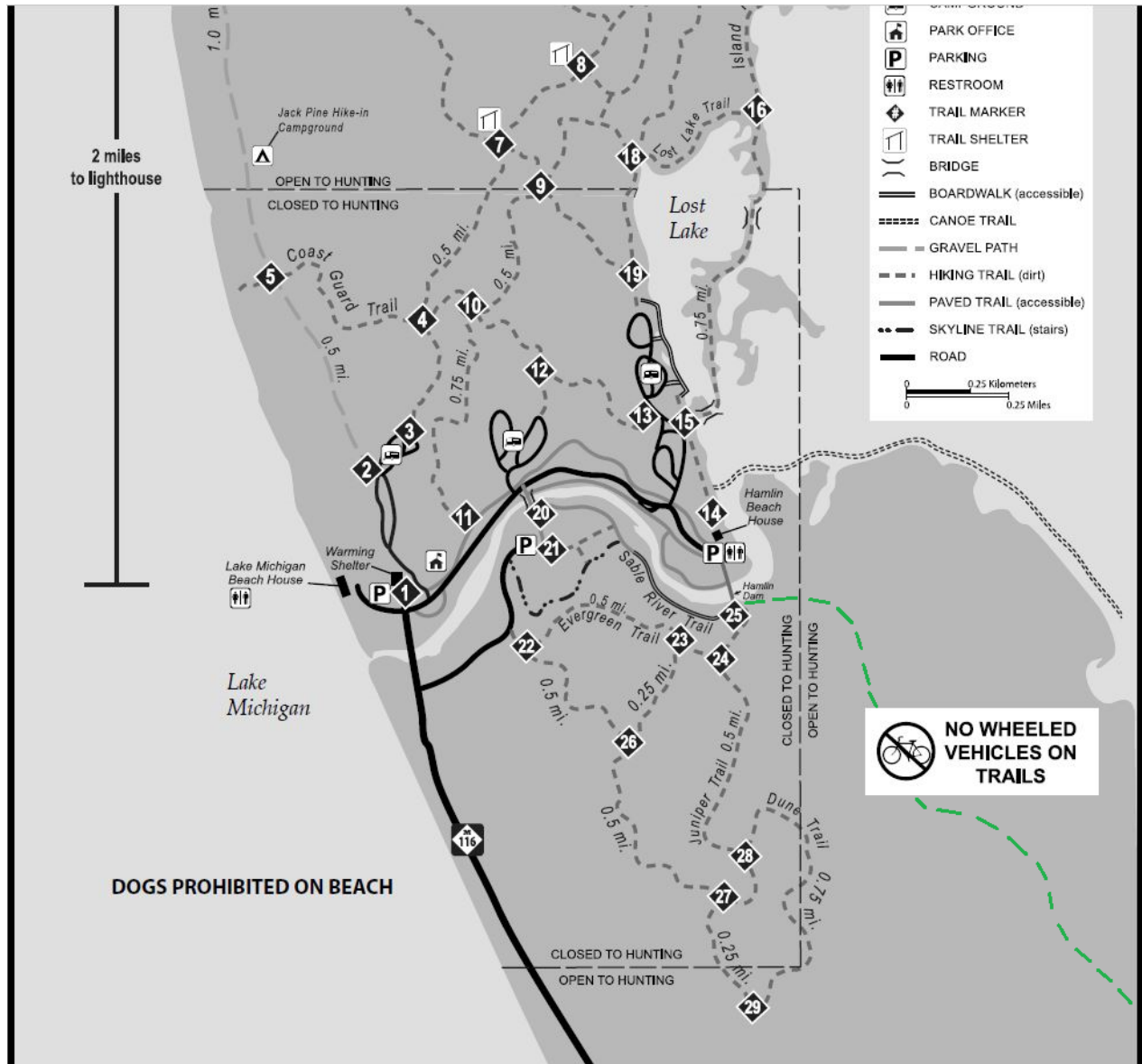
- Park near Hamlin Dam then cross dam to access trail
- 2 miles 'round trip, follows portion of Evergreen Trail
- Moderate difficulty, small hills and some sandy areas, some wetlands
- Can be combined with Evergreen and Dune Trails for variety
- Trail travels through jack pine barrens and near wetlands

Dune Trail



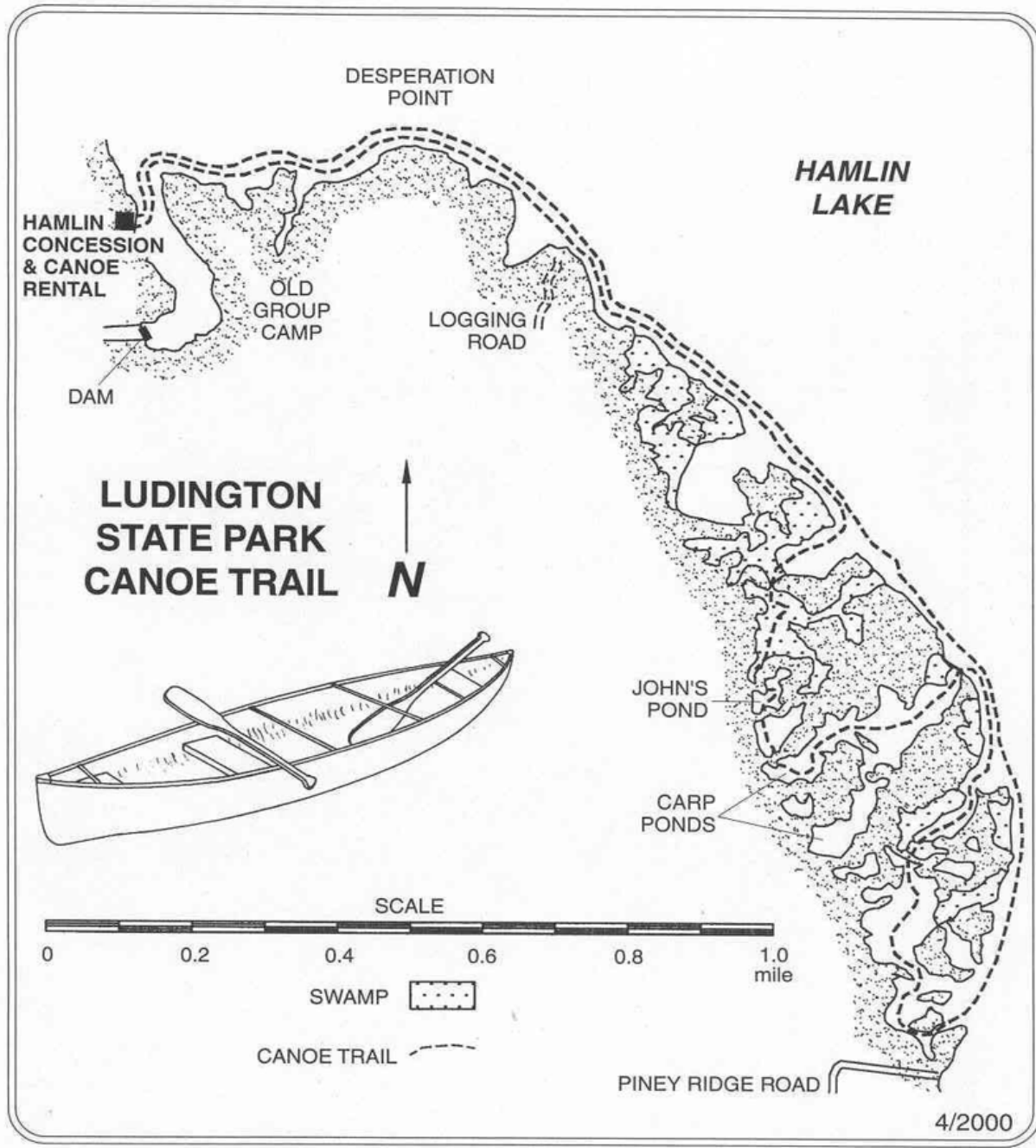
- Park near Hamlin Dam then cross dam to access trail
- 3 miles 'round trip, follows portion of Juniper Trail
- Difficult due to sandy tread
- Can be combined with Juniper Trail and Evergreen Trail segments for variety
- Trail goes through jack pine barrens and open dunes, and travels near wetlands

Piney Ridge Trail



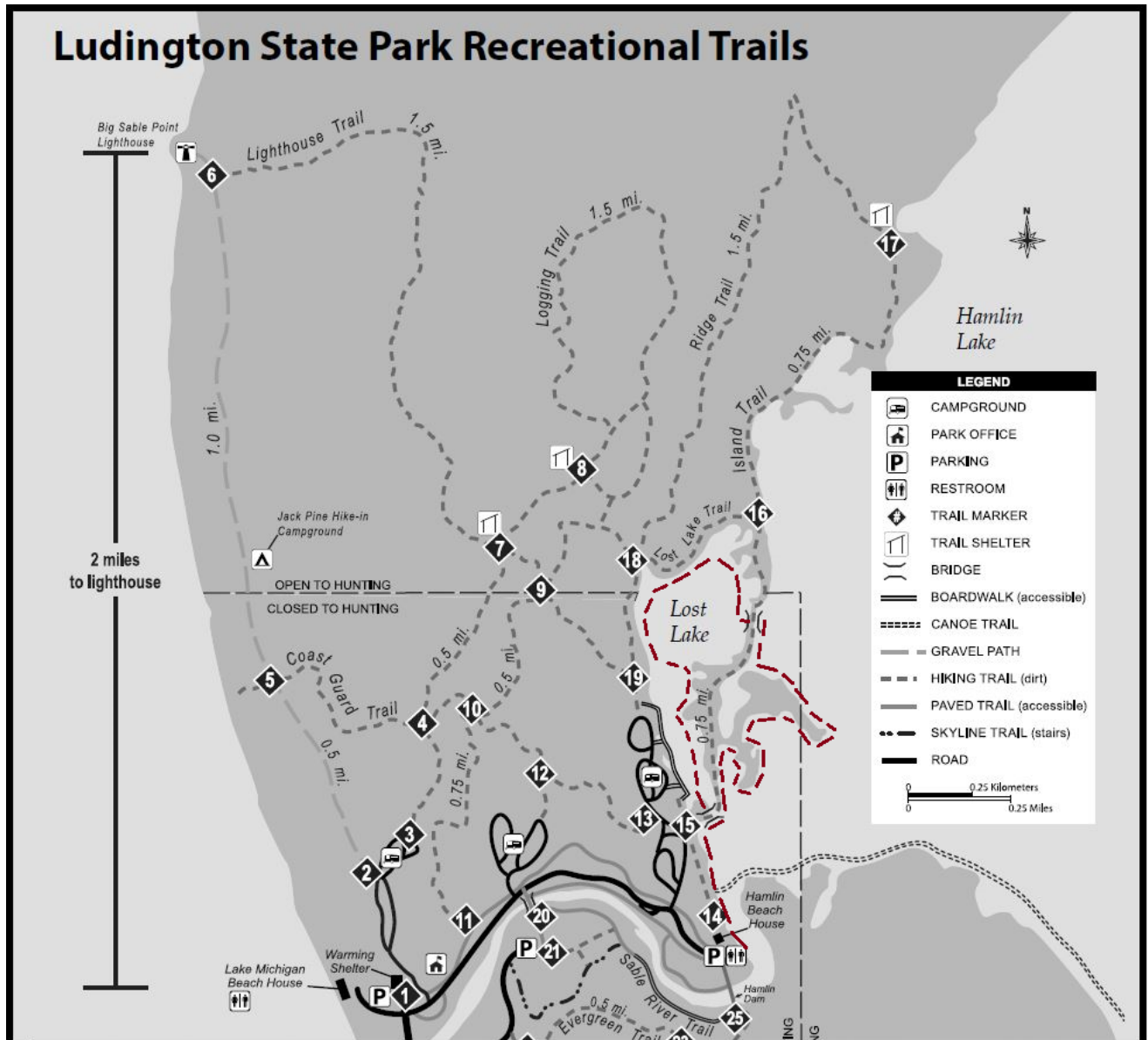
- Park on Piney Ridge Road or at Hamlin Dam
- 3 miles out and back
- Moderate difficulty
- Primarily forested trail through secondary dunes, large hill near Hamlin Dam

Canoe Trail – South



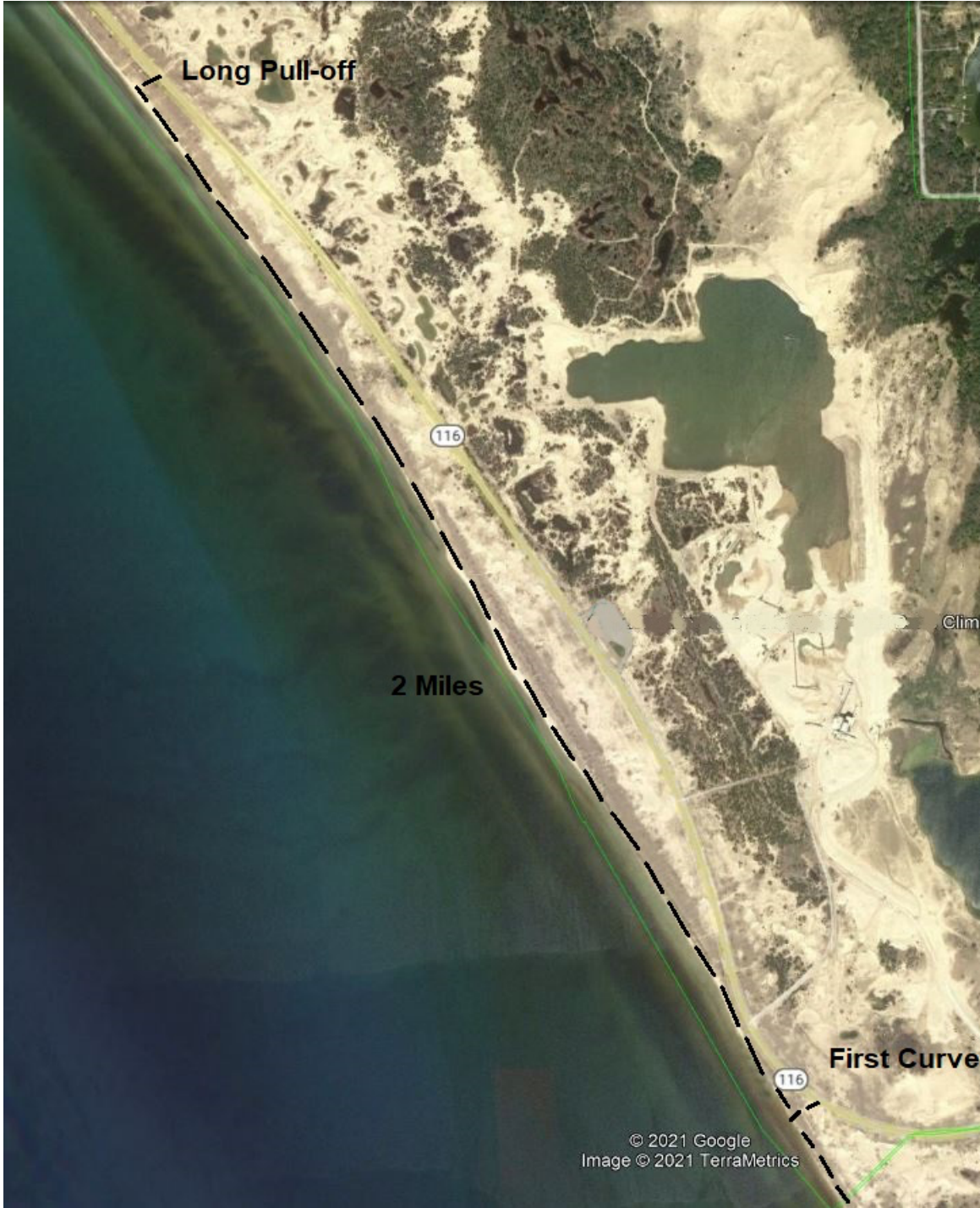
- Park at boat launch and use shore or accessible kayak launch to launch boats
- 5 plus miles 'round trip
- Difficult, four portages, some difficulty in route finding, headwinds from north or south can make the stretch around Desperation Point miserable
- Travels along shoreline and through small swamps and wetlands
-

Canoe Trail – North



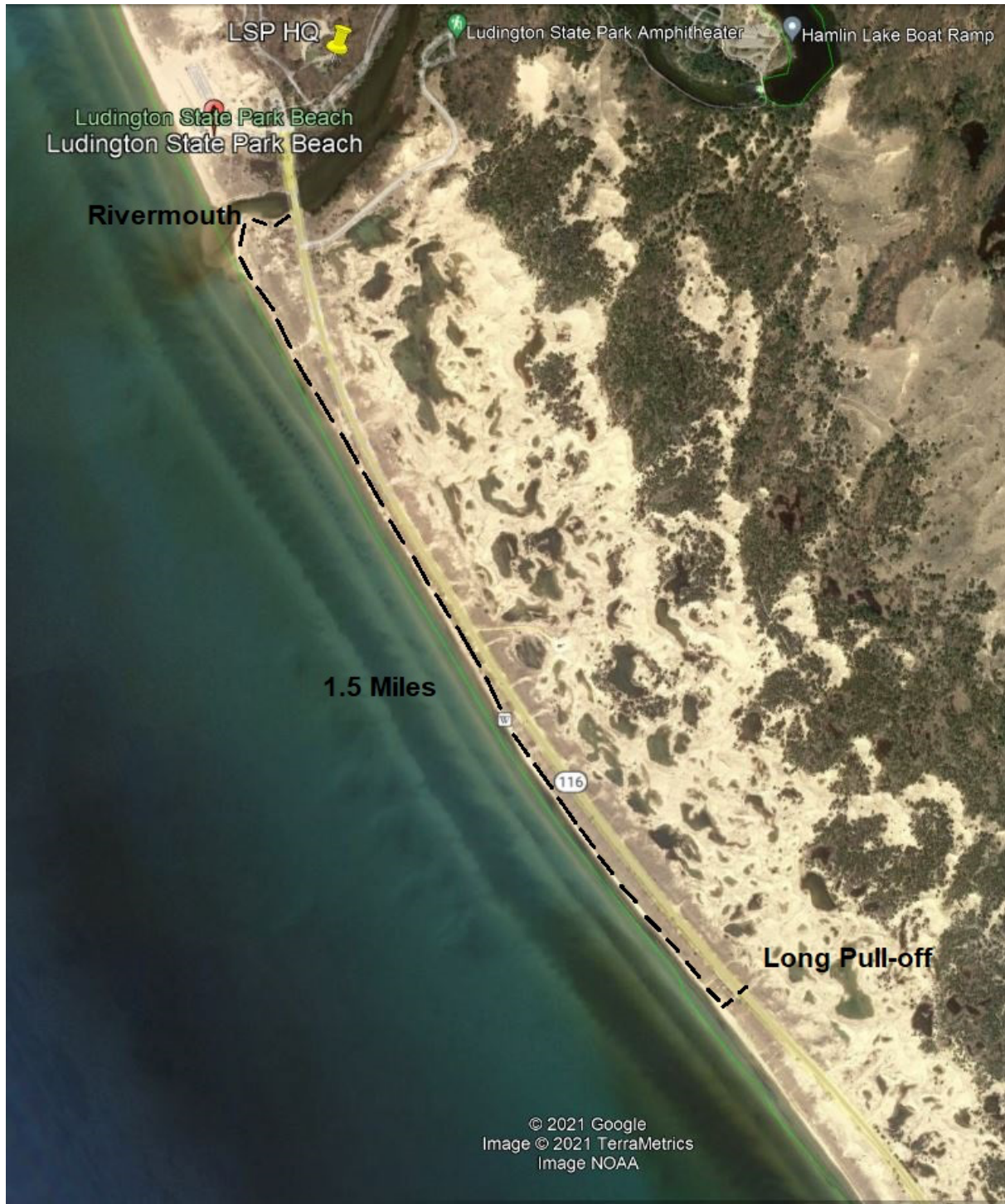
- Coming soon

Beach - First Curve to Long Pull-off



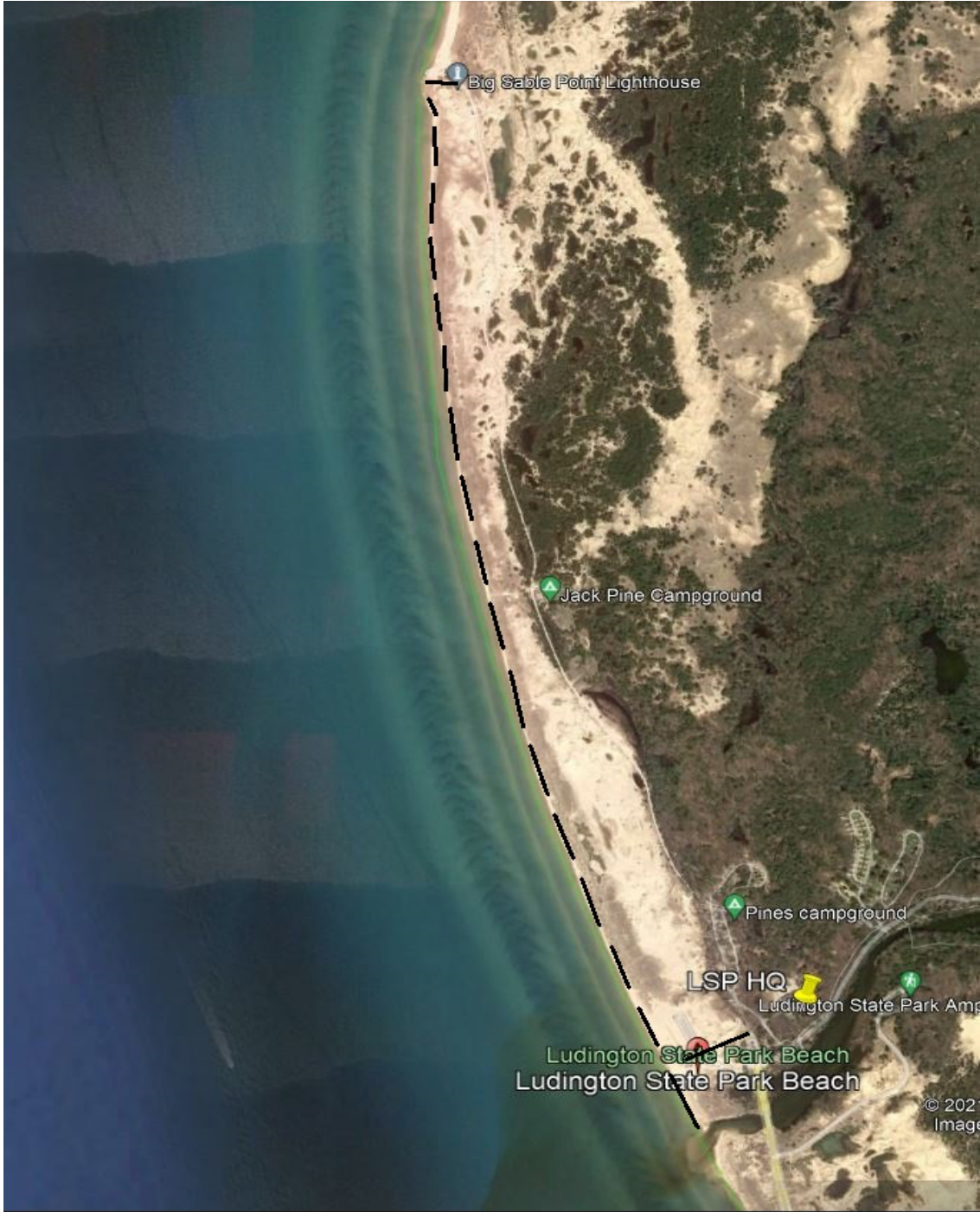
- Access beach at either First Curve or the long pull-off on M-116
- 2 miles one way
- Moderate difficulty – sandy tread, potential for waves, might need to cross piers, lots of washed up garbage

Beach – Long Pull-off to Big Sable River



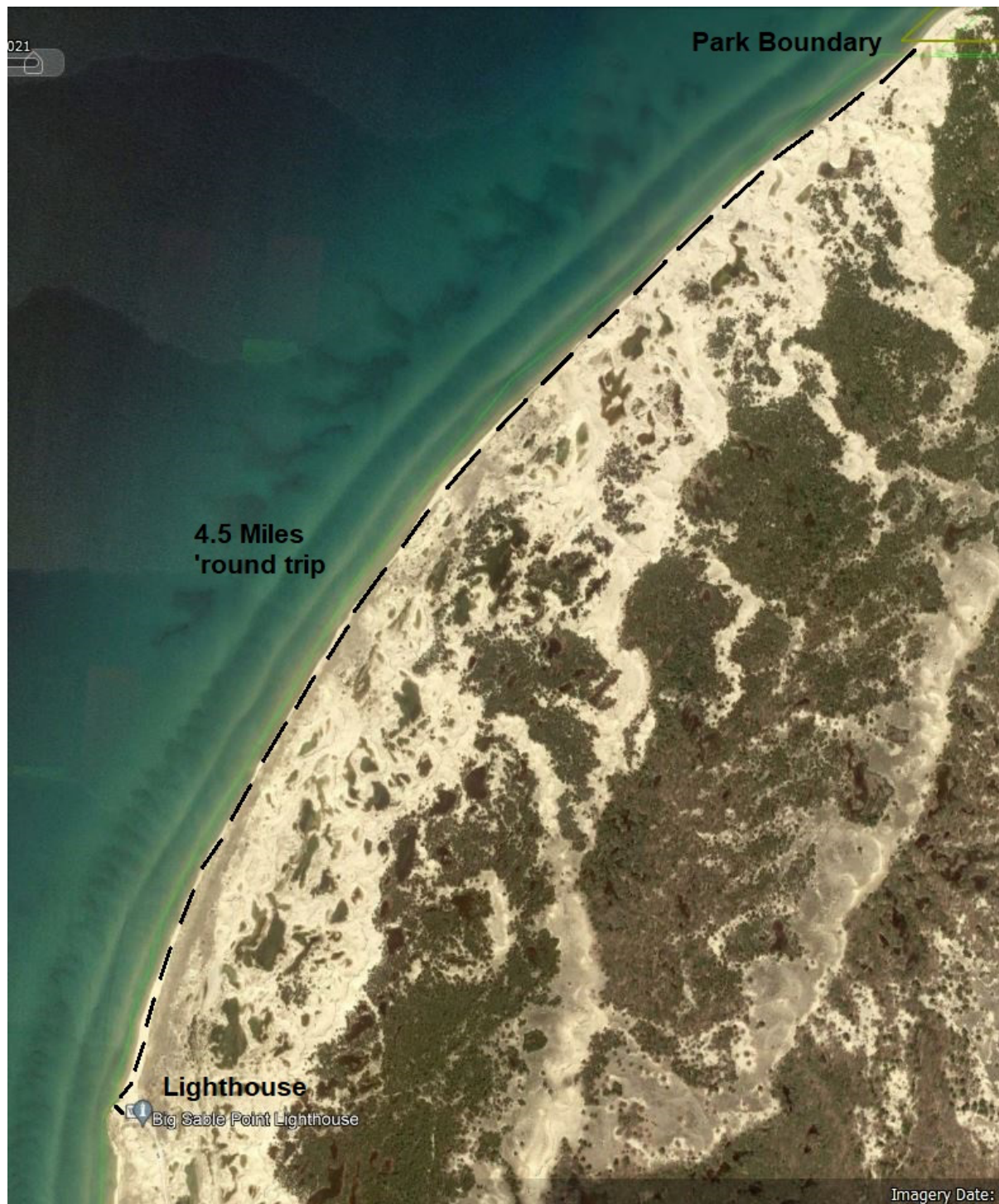
- Access beach at long pull-off or mouth of Big Sable River
- 1.5 miles one way
- Moderate difficulty – sandy tread, potential for waves, might need to cross piers, lots of washed up garbage

Beach – Big Sable River to Lighthouse



- Access beach at Lake Michigan beach house or Big Sable Point lighthouse after 1.8 mile hike along Lighthouse Road
- 2 miles one way
- Moderate difficulty – sandy tread, potential for waves, might need to cross piers, lots of washed up garbage

Beach – Lighthouse to Park Boundary



- Access beach at lighthouse, staff will provide vehicle access to lighthouse
- 4 miles round trip
- Moderate difficulty – sandy tread, potential for waves, might need to cross piers, lots of washed up garbage